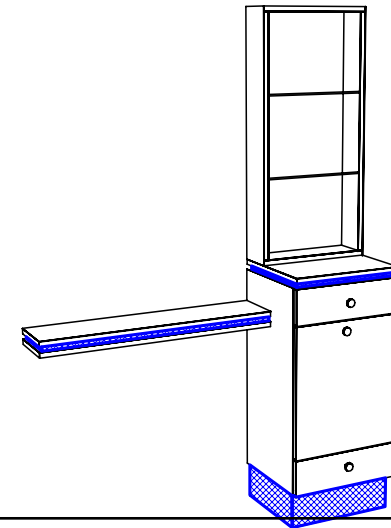


POWER STRIP INSTRUCTIONS

1. Mount power strip on mounting screws inside the cabinet at the location shown to the left.
2. Cord may exit through provided grommet hole in the bottom/rear of cabinet, or you may provide your own means of providing power.



- INSTALLATION INSTRUCTIONS**
1. Flip all knobs/pulls from inside cabinet to outside, reference diagram 1.
 2. Install Appliance Center see diagram 3 for details.
 3. Install the power strip ... see power strip instructions to the left.
 4. Attach cabinet to wall ... see diagram 9 for details.
 5. Remove top drawer. Refer to diagram 8.
 6. Set retail on top of cabinet and attach using provided 2 3/4" bolts and washers up through top of cabinet into bottom of retail.
 7. Re-install drawer removed in step 4.
 8. Mount purse shelf to wall and cabinet at 33" from floor to the top of the shelf ... see diagram 5 for details.
 9. Reference diagram 2 for help installing a mirror.

This drawing is the property of Collins Manufacturing Company and is protected under copyright law.

Quantity -

Finish Schedule
Face Color -
Top Color -
Toe Color -
Pulls -
Interior -
Other (Specify) -

Installation Notes:
1. All hardware needed for assembly is included.
2. Large items are preassembled at the factory to ensure proper alignment. Items are then disassembled into manageable sections for shipping purposes and ease of reassembly.
3. Shipping cleats need to be removed before installation. These cleats are installed to prevent damage.

collins		Collins Manufacturing 809 E 20th Street Cookeville TN 38501
Title: QSEp London Tower Station w/ 36" Ledge		
Size:	#: 408-54	Drawn By:
Date: 11/14/04	Sheet #: 4	