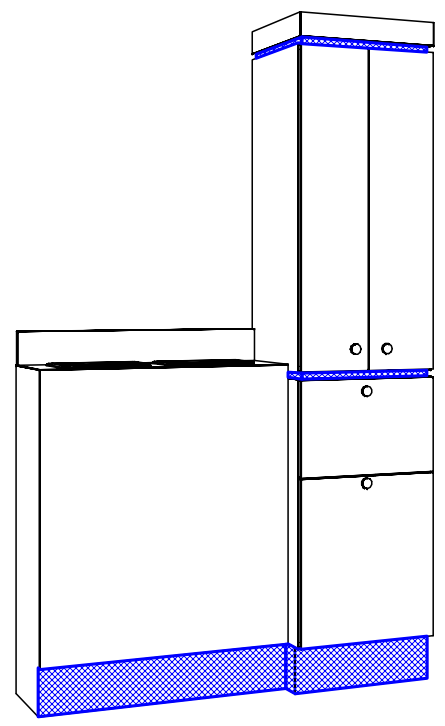
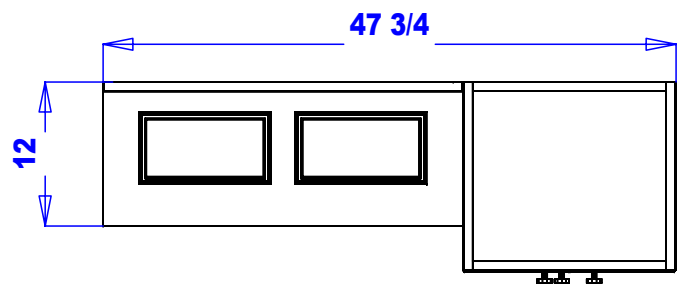
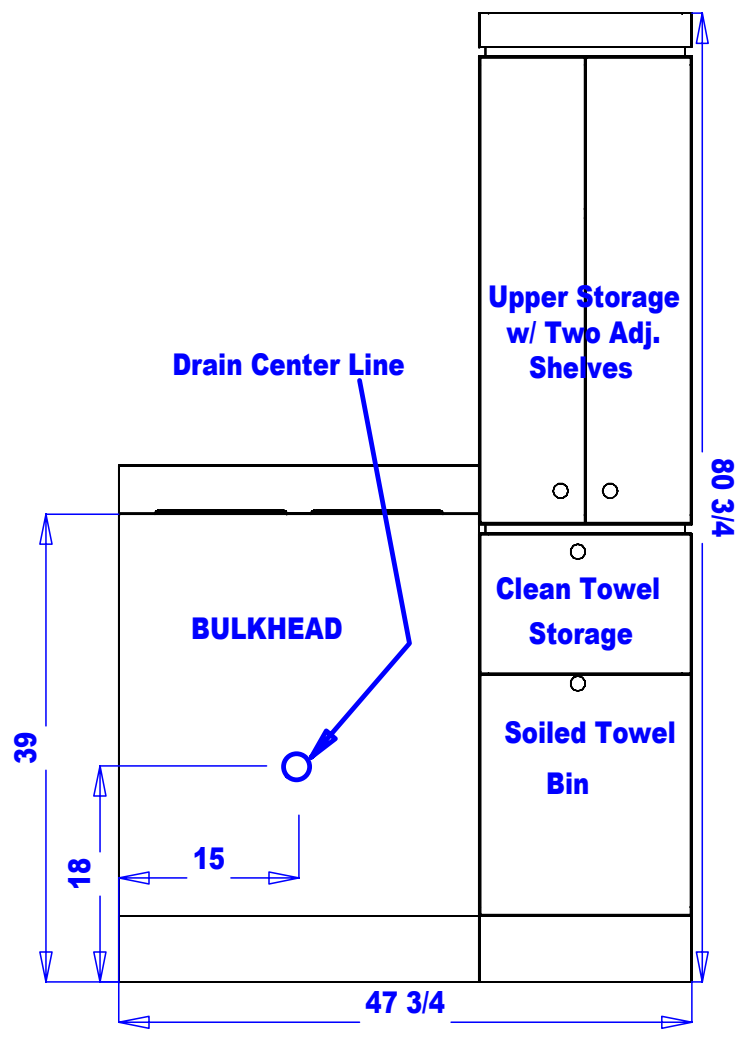


427-48 Plumbing Specifications



Preliminary
Not For Construction

This drawing is the property of Collins Manufacturing Company and is protected under copyright law.

Quantity -

Finish Schedule

Face Color -
Top Color -
Toe Color -
Pulls -
Interior -
Other (Specify) -

General Notes:

1. All counter tops are to be made removable wherever possible.
2. Items must be broken into manageable sections For Shipping. Mark For Ease Of Reassembly.
3. Install Shipping Cleats Wherever Possible To Prevent Shipping Damage.
4. Purchased items Must Be Trial Fit Before Shipping.

collins		Collins Manufacturing 809 E 20th Street Cookeville TN 38501	
Title: QSEp Bulkhead w/ Tower Assistant			
#:	#: 427-48	Drawn By:	
Date:			Sheet #: 4