

Finish Schedule

Face Color -
 Top Color -
 Toe Color -
 Pulls -
 Interior -
 Other (Specify) -

Installation Notes:

1. All hardware needed for assembly is included.
2. Large items are preassembled at the factory to ensure proper alignment. Items are then disassembled into manageable sections for shipping purposes and ease of reassembly.
3. Shipping cleats need to be removed before installation. These cleats are installed to prevent damage.

collins

Collins Manufacturing
 809 E 20th Street
 Cookeville TN 38501

Title: **QSEp Concept Bulkhead w- Tower Assistant**

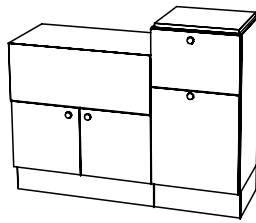
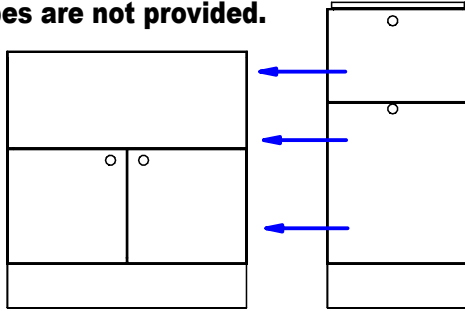
Size: # **430-48**

Drawn By:

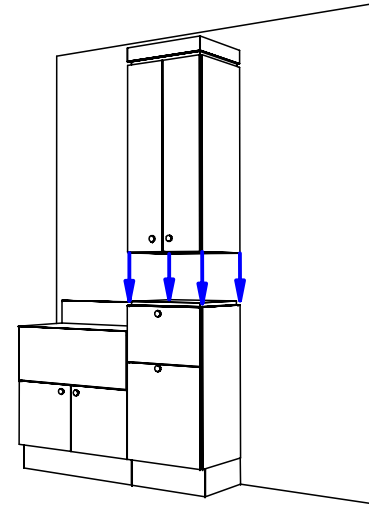
Date: **05/19/04**

Sheet #: **6**

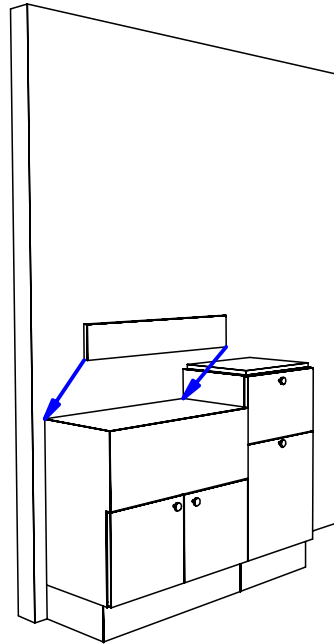
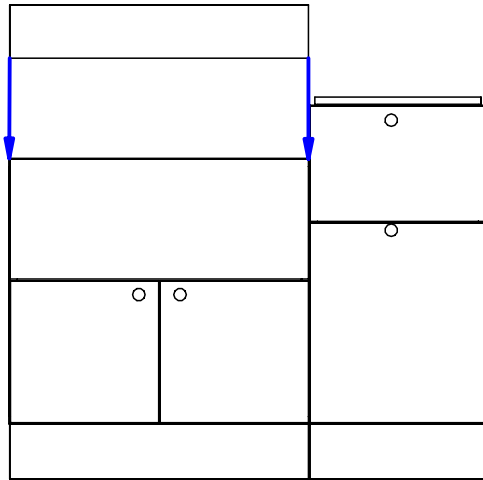
1. Cabinets should be attached to wood framed walls by screwing through the interior back panel into wall studs or blocking. Fasteners for wood framed walls are provided. The fasteners for other wall types are not provided.



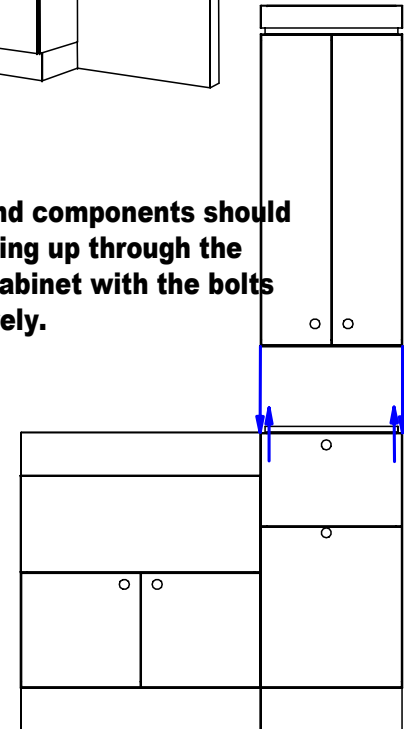
2. Adjacent cabinets and components should be assembled by fastening through the interior panels with the screws provided. Tighten securely.



3. Attach loose backsplash to wall above assembled cabinets using contractor adhesive ("Liquid Nail").



4. Adjacent cabinets and components should be assembled by fastening up through the bottom into the upper cabinet with the bolts provided. Tighten securely.



Quantity -

Finish Schedule

Face Color -
 Top Color -
 Toe Color -
 Pulls -
 Interior -
 Other (Specify) -

Installation Notes:

- 1. All hardware needed for assembly is included.**
- 2. Large items are preassembled at the factory to ensure proper alignment. Items are then disassembled into manageable sections for shipping purposes and ease of reassembly.**
- 3. Shipping cleats need to be removed before installation. These cleats are installed to prevent damage.**

collins Collins Manufacturing
 809 E 20th Street
 Cookeville TN 38501

Title: **QSEp Concept Bulkhead w- Tower Assistant**

Size: # **430-48** Drawn By:

Date: **05/19/04** Sheet #: **5**