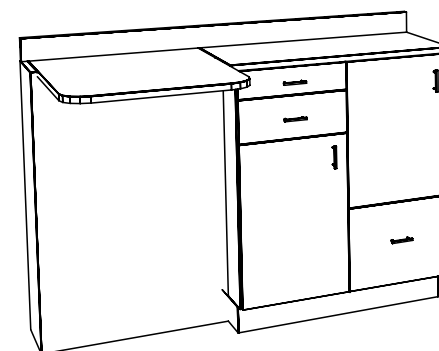


STEP 1. Mount lift lid to top of shampoo storage well.
See diagram 4.

STEP 2. Mount black splash to cabinet with mending plate and screws supplied.

STEP 3. Set cabinet in place against wall. Remove drawers from cabinet (see diagram 8). Mount cabinet to wall with (4) 3" wood screws and beauty washers through interior back panel of cabinet into wall studs (see diagram 9).




Quantity - 1

Finish Schedule - 760-54-1

Face Color - COLOR
Top Color - TOP COLOR
Toe Color - (Specify)
Pulls - Chrome Wire
Interior - White
Other (Specify) -

Installation Notes:

1. All hardware needed for assembly is included.
2. Large items are preassembled at the factory to ensure proper alignment. Items are then disassembled into manageable sections for shipping purposes and ease of reassembly.
3. Shipping cleats need to be removed before installation. These cleats are installed to prevent damage.

 Collins Manufacturing 2000 Bowser Rd. Cookeville TN 38506		
Title: CUST		
Size:	#: SO	Drawn By: ENGR
Date: 09/21/06	Sheet #: 7	