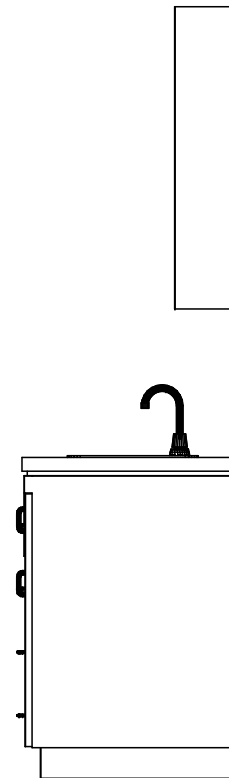
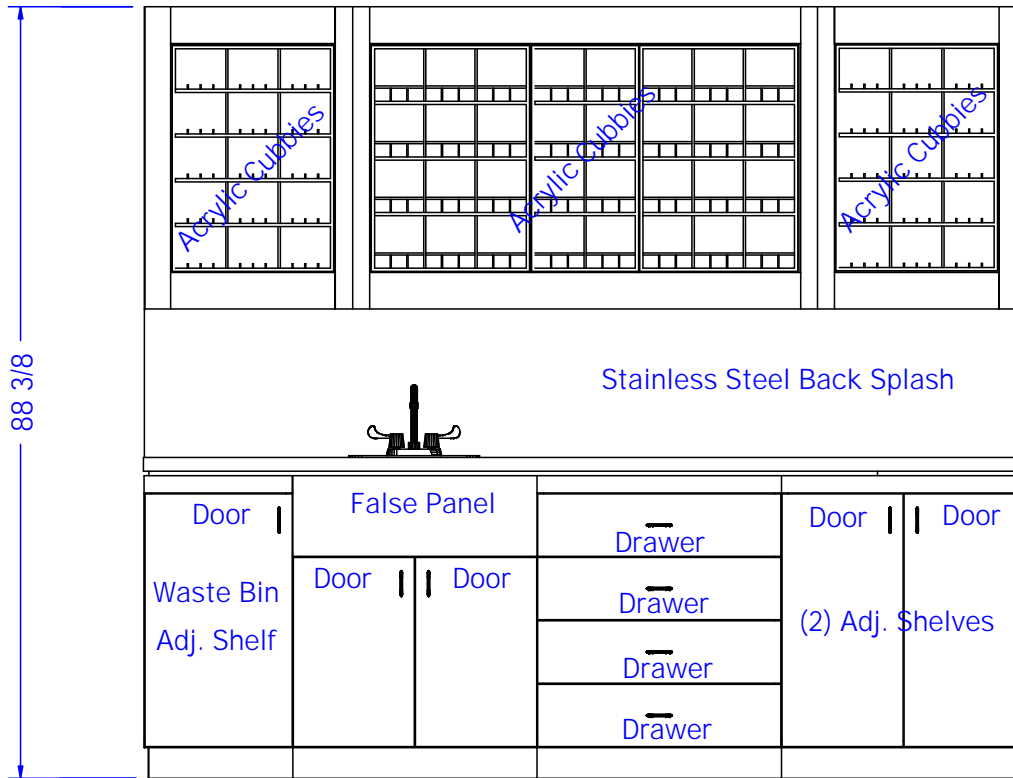


Center Line of Sink  
 31" from left side,  
 13" from the wall;  
 drain should be roughed  
 at 18" from floor



**Finish Schedule - 851-101-1**

Face Color  
 Top Color -  
 Toe Color -  
 Reveal  
 Hardware - Brushed Chrome Wire Pulls  
 Interior - Black Melamine  
 Other (Specify) - N/A

**Preliminary  
 Not For Construction**

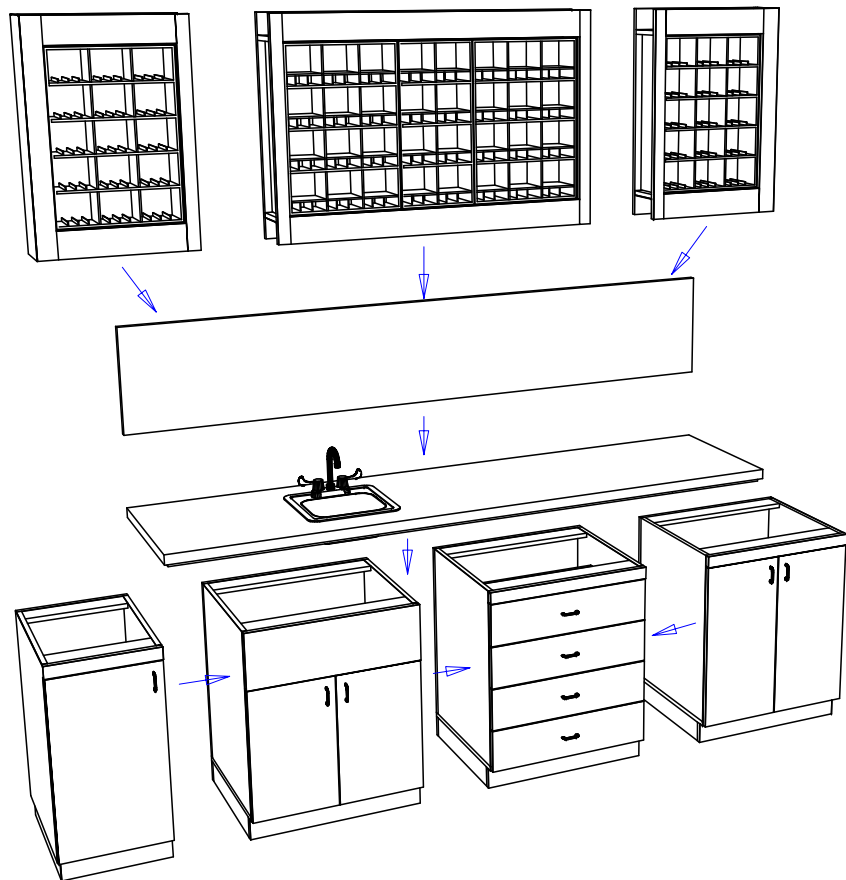
This drawing is the property of Collins Manufacturing Company and is protected under copyright law.

- Approved as drawn.
- Approved w/ changes noted.
- Not approved - re-submit.

Signature \_\_\_\_\_  
 Company \_\_\_\_\_ Date \_\_\_\_\_

**Collins** Collins Manufacturing  
 2000 Bowser Road  
 Cookeville, TN 38506

Title:		
Size: NTS	Drawing Number: 69462	Drawn By: Mike
Date:	Sheet 2 of 13	



Attach adjacent cabinets, end panels, and support legs by fastening through the pre-drilled holes with the provided connector bolts. These bolts will thread into a factory installed threaded fastener, t-nut or provided matching connector nut depending upon the application and visibility of the fasteners. Some applications may require drilling holes on-site and the use of 1 ¼" wood screws and decorative washers.

This item is attached to the wall with wood screws. 3" wood screws and decorative washers are provided for wood framed walls. Fasteners for other wall types are to be obtained locally. Screw through the back panel in locations which will be inconspicuous after installation. Suggested locations include: under shelves, behind drawers, and locations hidden by products or supplies.


Counter top joints and seams in proximity of sinks, shampoo bowls, or pedicure basins are to be sealed on-site with clear silicone caulk to prevent water intrusion and damage.

### Finish Schedule - 851-101-1

Face Color -  
 Top Color -  
 Toe Color -  
 Reveal / Accent Color -  
 Hardware - Brushed Chrome Wire Pulls  
 Interior - Black Melamine  
 Other (Specify) - N/A

### General Notes:

1. All counter tops are to be made removable wherever possible.
2. Items must be broken into manageable sections For Shipping. Mark For Ease Of Reassembly.
3. Install Shipping Cleats Wherever Possible To Prevent Shipping Damage.
4. Purchased items Must Be Trial Fit Before Shipping.

 Collins Manufacturing 2000 Bowser Road Cookeville, TN 38506		
Title		
Size: NTS	Drawing Number: 69462	Drawn By: Mike
Date:	Sheet 13 of 13	